

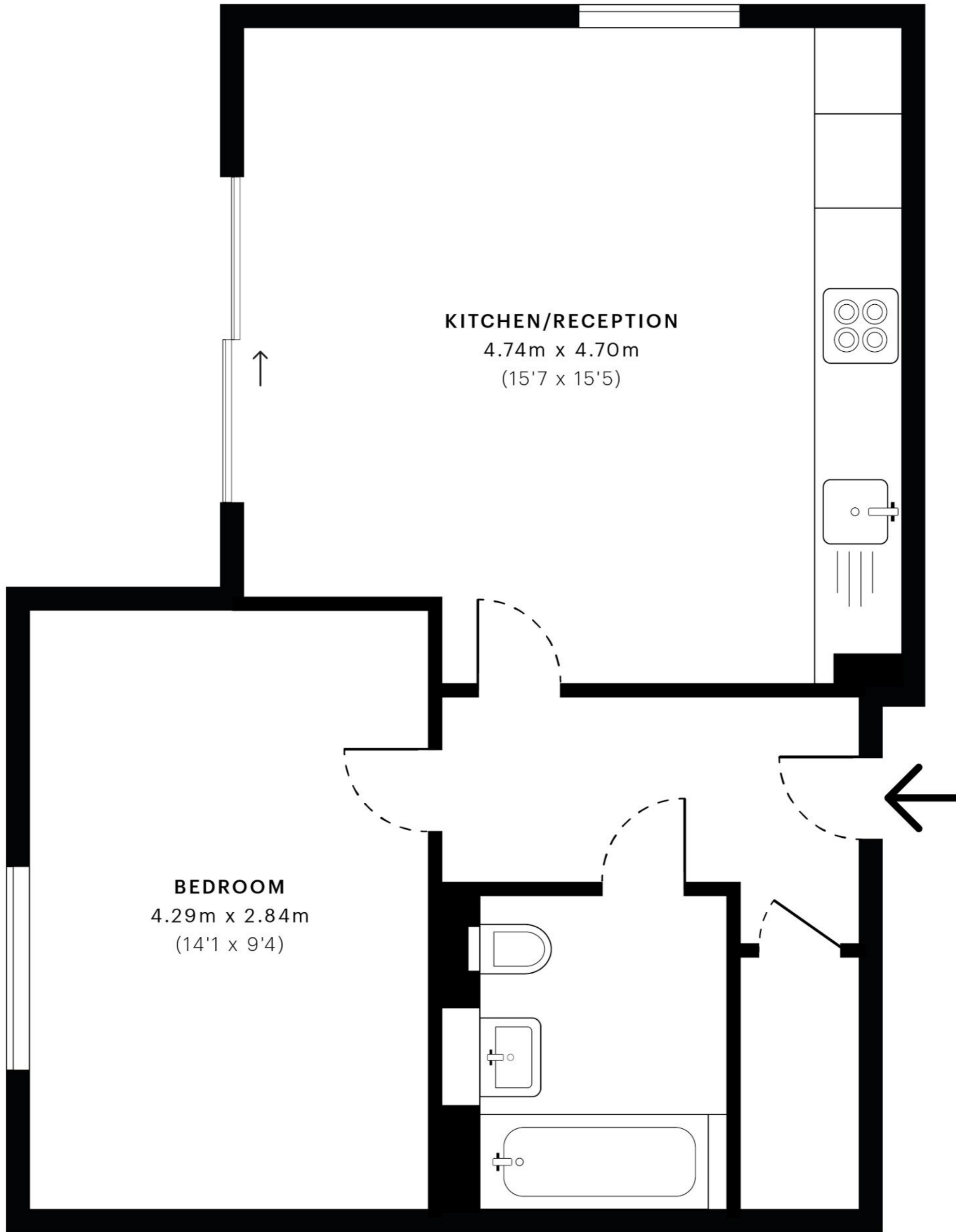


Calum Court, CR8

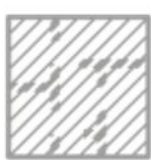
CAPTURE DATE
05/06/2020


LASER SCAN POINTS
14,913,127

GROSS INTERNAL AREA
45.5 Sqm / 489.7 Sqft




— First Floor

 GROSS INTERNAL AREA (GIA)
The footprint of the property.
45.5 Sqm / 489.7 Sqft

 NET INTERNAL AREA (NIA)
Excludes walls and external features.
Includes washrooms, restricted head
43.1 Sqm / 464.3 Sqft

 EXTERNAL STRUCTURAL FEATURES
Balconies, terraces, verandas etc.
0.0 Sqm / 0.0 Sqft

 RESTRICTED HEAD HEIGHT
Limited use area under 1.5m
0.0 Sqm / 0.0 Sqft



Spec floor plans are produced in accordance with the Royal Institution of Chartered Surveyors' Property Measurement Standards. Plots and gardens are illustrative only and are excluded from all area calculations. Due to rounding, numbers may not add up precisely. All measurements shown for the individual room lengths and widths are the maximum points of measurements captured in the scan.

IPMS 3B RESIDENTIAL
45.9 Sqm / 494.2 Sqft

IPMS 3C RESIDENTIAL
43.8 Sqm / 471.5 Sqft

SPEC ID
5ecfa0ac99d0870a3ea70fd2



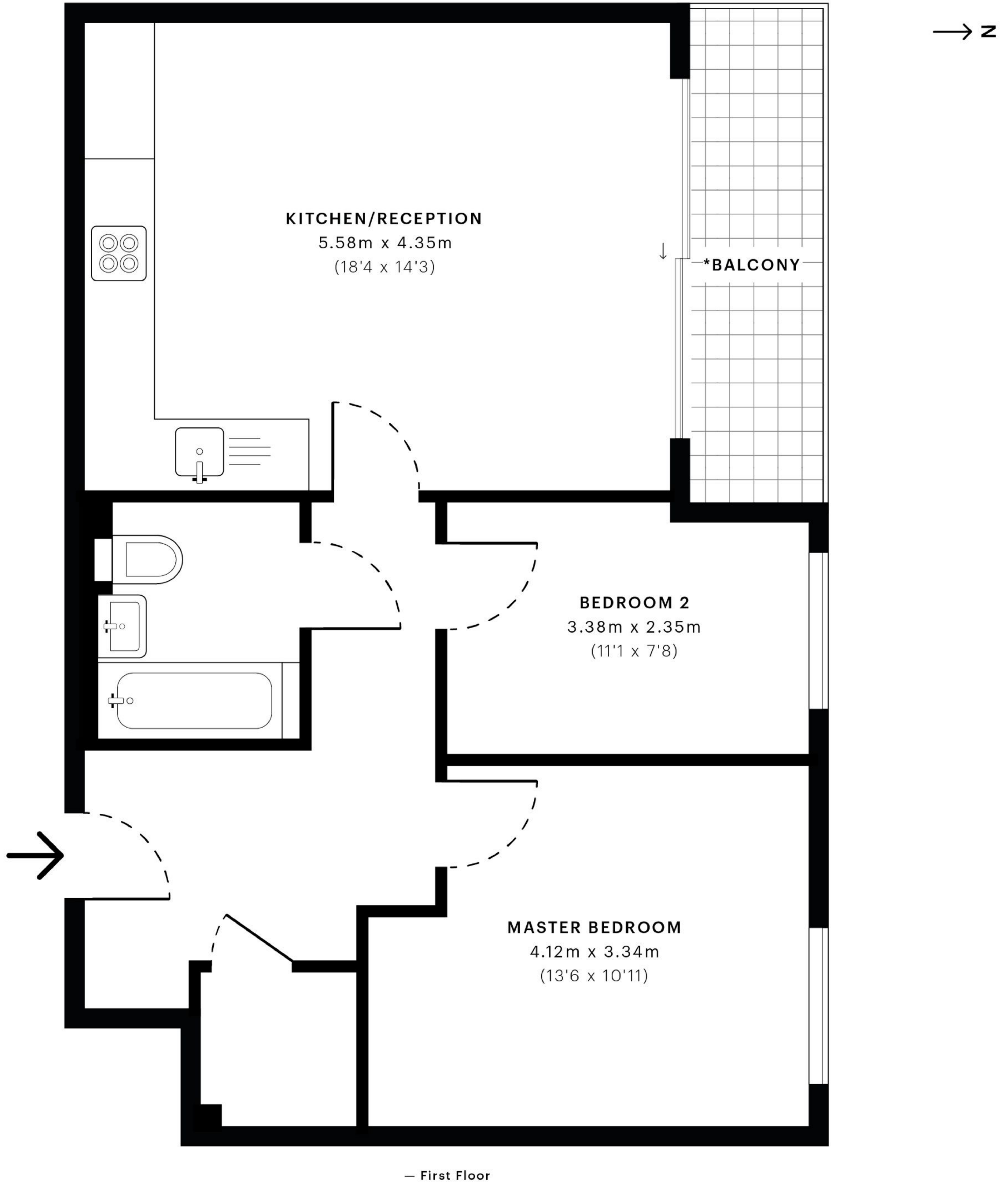



High Street, CR8

CAPTURE DATE
05/06/2020

LASER SCAN POINTS
25,990,318


GROSS INTERNAL AREA
62.6 Sqm / 674.2 Sqft



 GROSS INTERNAL AREA (GIA)
The footprint of the property.
62.6 Sqm / 674.2 Sqft

 NET INTERNAL AREA (NIA)
Excludes walls and external features.
Includes washrooms, restricted head
59.4 Sqm / 638.9 Sqft

 EXTERNAL STRUCTURAL FEATURES
Balconies, terraces, verandas etc.
0.0 Sqm / 0.0 Sqft

 RESTRICTED HEAD HEIGHT
Limited use area under 1.5m
0.0 Sqm / 0.0 Sqft



Spec floor plans are produced in accordance with the Royal Institution of Chartered Surveyors' Property Measurement Standards. Plots and gardens are illustrative only and are excluded from all area calculations. Due to rounding, numbers may not add up precisely. All measurements shown for the individual room lengths and widths are the maximum points of measurements captured in the scan.* Excluded from measurements

IPMS 3B RESIDENTIAL
62.7 Sqm / 674.6 Sqft

IPMS 3C RESIDENTIAL
59.8 Sqm / 644.0 Sqft

SPEC ID
5ecfa04599d0870a3ea70fd0

